

# CAMPTON HISTORICAL SOCIETY

FALL 2010

## White Mountain Orchard

Submitted by: Rebecca Kelly

The following is by Rebecca Kelly – an eighth grader at Campton Elementary. She interviewed her father Karl Kelly Jr. in October of 2010.

**Rebecca:** Where was the orchard?

**Karl:** On Mason Road off of Ellsworth Hill Road in West Campton

**Rebecca:** When did it start and end?

**Karl:** My grandfather Robert John Kelly obtained White Mountain Orchard from its previous owner, Kent Perley, in 1945. In 1952, Grandpa bought a piece of land from Bea Dunklee and built the High Altitude building. Grandpa ran the business until he died in 1983. His wife, Dorothy, then sold both orchard and building to a company in Florida. It officially ended in '92.

**Rebecca:** What was your role?

**Karl:** I grew up at the orchard working with my family. I started as a laborer, worked up to manager and eventually owner.

**Rebecca:** What was a typical season like from spring through fall and winter?

**Karl:** The season began in early spring with pruning. We brought in and set out 75 bee hives for a week. We also sprayed, mowed, and fertilized. Some years we planted new trees in late spring. Over the summer, spraying and mowing continued. We prepared equipment for the harvest season. The retail business at the “storage” (locally known as the High Altitude building, currently Thornton Collision) began as well. Some workforce, partly Jamaican migrant workers, began. Some of the Jamaicans came back every year and became family friends. In the fall, more workers were hired, including local people and more migrant workers. Fruit was harvested and mowing continued. We operated seven retail businesses, including pick-your-own and satellite farm stands; we also operated our wholesale business from the High Altitude building. In the fall and early winter we began to prepare for the next season as well.

**Rebecca:** What kind of apples grew there?

**Karl:** Twenty-seven different varieties of apples. Majority, Macintosh, Cortland, Delicious. Also Northern Spy, Wealthy, Macoun, Yellow Transparent, Early Mac, Gravenstein, Empire, Paula Red, Viking, Quinty, Lodi, Wolf River

**Rebecca:** How many trees and/or bushels of apples?

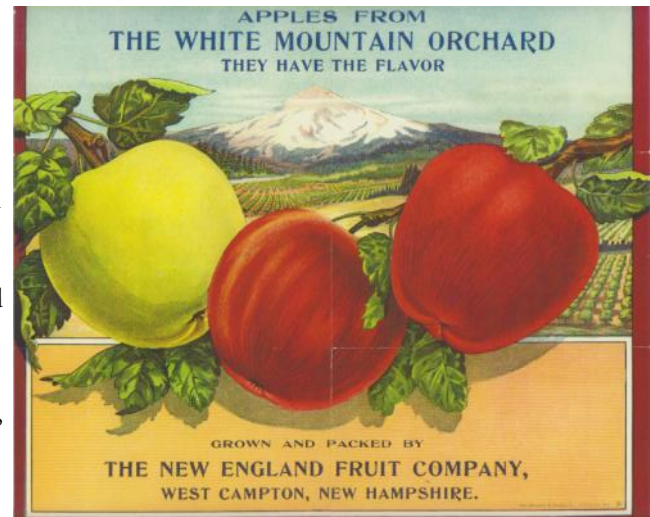
**Karl:** 11,000ish trees, and 50,000 – 75,000 bushels of apples

**Rebecca:** What did you sell? Apple cider? Apple butter? Other things?

**Karl:** We sold apples, cider, pumpkins, gifts, jelly, jam, and cheese.

**Rebecca:** How was the current Thornton Collision building (pictured below) used?

**Karl:** Cold storage, warehouse, packing, office, wholesale, and retail distribution center, cider mill



**Rebecca:** How many people worked there?

**Karl:** Varied from year to year – as many as 22.

**Rebecca:** What was your favorite part of the season?

**Karl:** Harvest time

**Rebecca:** What was your least favorite part of the season?

**Karl:** Pollination, because we had to handle the bees.

**Rebecca:** Why did it close?

**Karl:** Closed due to various complicated economic reasons.

## Blair Bridge Model

Submitted by PRHS Senior Aliza Harrigan

On Monday, May 3<sup>rd</sup>, the Campton Historical Society celebrated the installation of the newest piece of their extensive collection. This scale model of the Blair Bridge was constructed entirely by students from Plymouth Regional High School as a community outreach project initiated by Reed Harrigan, a PRHS staff member; Building Trades teacher, Rick Doell, supervised the project. With scrupulous attention to detail, the six students worked on the scaled replica, taking measurements in February. Students made sure every aspect of the project- from the pitch of the roof to the elevation of the bridge from the water- was accurate. At a scale of five feet to one inch, this covered bridge was a formidable achievement!

The finished model is the result of over 100 hours of work on the part of its creators: Garrett Graton, Chris Mayhew, Gabe Horton, Brian Roy, Kevin Reisert, and Colby Shinn. The bridge was constructed of wood from an old barn in Campton, which was planed down, stained, and cut to accurate dimensions. The attention to detail is one of the most striking facets of the project. Any viewer familiar with the Blair Bridge would be sure to recognize it immediately. Observers said they were amazed by how long the model is, because the actual length of the Blair Bridge is not apparent from the road or from the Blair Woods Trail. To see one of Campton's unique attractions from a new vantage point, visit the Campton Historical Society during their hours of operation, which are available on their website:

[www.camptonhistorical.org](http://www.camptonhistorical.org).



## New Artifacts Received

Submitted by: Walt Stockwell

Here are **some** of the new artifacts we have received over the past several months. We thank these people and those others whom we did not have space to list. Come on over to see all of these additions in person. **And**, we request all readers to search their closets, garages and attics for treasures from the Campton area to donate or loan to our expanding exhibits.

**Wood Butter Churn** – from Eleanor McCoy Kane

**Trunk** – from George Short. This was used by the Potter Family when they first came to Campton where Mrs. Potter ran the Hillside Inn. This was located on Owl Street, near where the MacAveeny Greenhouse used to be, before it was torn down in 1940.

**Beebe River Pictures, and Ice Cream Scoop** (used in the company store).

Donated by Olive Blake. Note: our Beebe River Village display case has recently been re-built, and now has a larger collection for your viewing.

AND, we have a Draper (retirement) Chair donated by Barbara Currier.

**Hand Loom** – donated by the Cheney Family, and made by Dr. Harry Cheney. It is now being set up to be a working model by Marcia VanderMast of Wentworth, who is donating her expertise, and numerous hours to the project.

**U.S. Navy Uniform** – dress blues from Jim Parziale, First Class Electricians Mate in World War II.

**Collection of Magazines about the Civil War** – from Ed Wester.

And, a new **“What is it”** donated by Jules Doner. Come on over and take a guess as to its use.

**Collection of Articles and Photos regarding Henry Blair** – Thanks to Judy Clark for allowing us to copy these items for our files.

And we are now cleaning out the Carriage Shed in order to set up more displays, especially about farm and home. This will complement our new outdoor farm equipment exhibit. We hope to open this in the Spring.

See this newsletter and more in full color at [CamptonHistorical.org](http://CamptonHistorical.org)

# Cemetery Tour

Submitted by: Sandy Decarie

On a beautiful Saturday morning this past August about 30 people gathered at the Campton Historical Society to take the first Campton Cemetery Tour. Our guide, Bob Mardin, was very knowledgeable and if you will excuse the pun, knew where all the bodies lay.

Campton has 13 cemeteries and most of them are off the beaten track. They range from just a few graves to the largest being Blair Cemetery. Some were by the side of the road and some we walked into like the Bog Road Cemetery which, after a little walk, you find yourself behind the new National Forest Headquarters. As Bob explained most cemeteries were built by roads and were easier to get to then but as time went by, roads changed, and these cemeteries became lost to most people.

Most of the graves are those of soldiers from the Civil War, Revolutionary War and War of 1812. There are graves of early settlers and prominent citizens of the time like Colonel Samuel Holmes who was the benefactor of the Holmes Academy which later became Plymouth University. Time has withered the stones but a few people like Bob take time to research and keep records so these quiet groves and forest cathedrals are not lost completely.

A very special thank you also to Mr. Murphy, owner of the Aarmont Inn who allowed us to rock on his lovely porch while we ate our bag lunches, drank punch and watched clouds drifting over the mountaintops of his spectacular view.

If you would like to know more about these cemeteries please feel free to stop by the Campton Historical Society on any Thursday 9 to 4 and we will be glad to talk to you about them.



## *Beckett School Clears Town Pound*



A big thank you goes out to the boys at Beckett School for clearing the Town Pound.

**CHS would like to thank the National Forest Service** for taking time to help preserve Campton's cemeteries and for also sending pictures of the dam.

Stop by the building to see that and much more on most Thursdays from 9-4.

*Contest - Can you identify these people?*

*Prize - One of the new bridge mugs.*

Whoever names the most people correctly wins. If there is a tie, we will have a random drawing. Any additional information would be greatly appreciated. See the results in the newsletter. GOOD LUCK!

Email: paulyelle@gmail.com or snail mail CHS - PO Box 160 - Campton NH 03223



*Last Newsletter Answer*

Congratulations to Elizabeth N. Marshall for sending in the most information.

- 1) Webb Little - married my aunt Anna
- 2) Raymond McCoy
- 3) Erastus Dole?
- 4) My mother Ella McCoy Nath



Pictures from this past year's program night, Spring concert and Old Home Day. Thanks goes out to not only those that made it possible but to everyone that came out and made CHS a fun and vibrant community.

Pencil in Sunday, Dec. 5 from 4:00-5:30 for the Community Holiday Concert and Cookie Swap. Flyers will be sent to all CHS members. Jim Aguiar is hard at work lining up musicians - call him if you would like to be a part of it.

## IT'S MEMBERSHIP TIME!!!

- Membership runs from October 1<sup>st</sup> to September 30<sup>th</sup>.
- Membership is the primary source for mailing our monthly program notices and newsletters.
- The more members the merrier. Please help recruit friends, family and neighbors to help keep this great organization going.

We are looking forward to your support; send your check today. Mary E. Durgin, Treasurer

**Campton Historical Society**  
[www.CamptonHistorical.org](http://www.CamptonHistorical.org)  
 P.O. Box 160, Campton, NH 03223

Single Membership – \$12.00    
  Family Membership – \$20.00  
 Yearly membership is from October 1 through September 30.

Name \_\_\_\_\_

Mailing Address \_\_\_\_\_

City \_\_\_\_\_ State \_\_\_\_\_ Zip \_\_\_\_\_

Telephone \_\_\_\_\_

Email \_\_\_\_\_

Make checks payable to Campton Historical Society and mail to PO Box 160, Campton, NH 03223

**Members**

Enclosed is my check for dues.

This check also includes a donation to support projects to be done in the Old Town Hall, headquarters of the Society.

# Campton Historical Society

P.O. Box 160, 529 N.H. Route 175,  
Campton, NH 03223

[www.CamptonHistorical.org](http://www.CamptonHistorical.org)

NON-PROFIT ORG.  
US POSTAGE  
**PAID**  
PERMIT NO. 4  
CAMPTON, NH 03223



These businesses are supporters of Campton Historical Society. Please thank and support them, and visit their web sites.



[www.northwaybank.com](http://www.northwaybank.com)



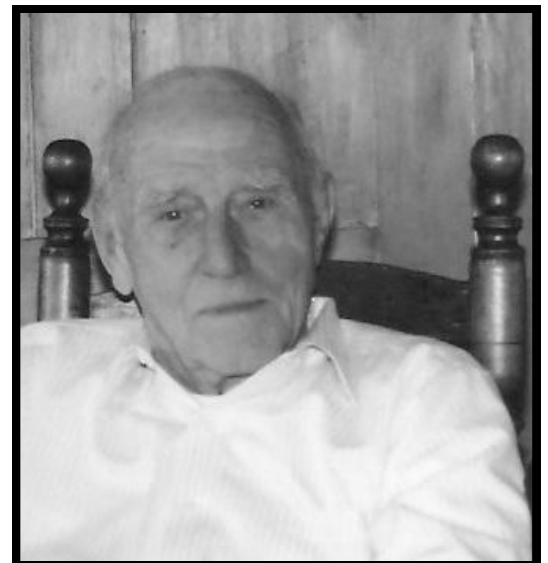
[www.mountainfareinn.com](http://www.mountainfareinn.com)



[www.mvsb.com](http://www.mvsb.com)



[www.colonelspencerbb.com](http://www.colonelspencerbb.com)



This issue of the CHS newsletter is dedicated to the memory of Russell Wilson Palmer (1912-2010), a life long resident of Campton and charter member of Campton Historical Society.



[www.cgsb.com](http://www.cgsb.com)